

FOR IMMEDIATE RELEASE:



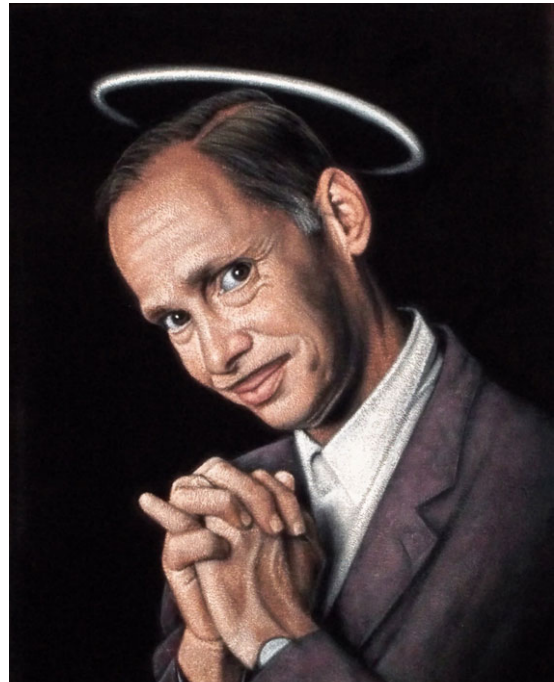
ICONS

A new exhibition from **Bruce White**

June 4th - 25th, 2022

Spoke Art is excited to share an all new collection of portraits on black velvet from artist Bruce White. This exhibition marks the most autobiographical series the artist has ever created, focusing on heroes from the LGBTQ community past and present.

Taking inspiration from pop culture and the political world, Bruce has created over 20 meticulous portraits to shine the light on those that have championed the advancement of equality for those most often marginalized within our society.



White had this to say about *ICONS*: “The earliest known black velvet paintings were brought back by Marco Polo from Kashmir. Because the fabric was so expensive, it was reserved only for portraits of royalty and religious icons, subjects of reverence and worship. I want to elevate and equate these heroes and allies of the LGBTQ movement to the level of royalty and sainthood, celebrating the diversity that shapes our popular culture.”

The exhibition will be on view during PRIDE for the month of June at our San Francisco location. Along with the portraits on black velvet, we will also be offering a selection of signed and numbered limited edition prints.

Please join us for *ICONS*, opening Saturday, June 4th for the opening reception from 4pm - 7pm PT. The event is open June 4th through June 25th. The online release for the artwork will be Thursday, June 9th at spoke-art.com. For more information, additional images, or exclusive content, please email us at events@spoke-art.com.

Due to the COVID-19 endemic we will be operating at a limited capacity. We ask that all visitors practice safe social distancing and wear facial coverings while inside the gallery.



WHAT :

ICONS

A new exhibition from Bruce White

WHEN :

Opening day: Saturday, June 4th, 2022 (4pm - 7pm)

On view: June 4th - 25th, 2022

WHERE :

Spoke Art Gallery

816 Sutter Street

San Francisco, CA 94109

ABOUT THE GALLERY

Spoke Art is an art space specializing in new contemporary painting, sculpture and illustration with an emphasis in accessible programming. Started in 2010, the gallery's first location opened in San Francisco and later expanded to a second location in New York City. In 2020, Spoke Art decided to take the gallery experience on the road with monthly exhibits across the United States that feature a wide variety of solo and group shows, many of which feature an international roster of represented artists.

Visit our sister galleries, [Hashimoto Contemporary](#) in San Francisco and New York, and our newest venture, [Harman Projects](#) in New York City.

RELEVANT LINKS

SPOKE ART : <http://www.spoke-art.com/>

BRUCE WHITE: <https://www.instagram.com/velvetgeek/>